

Marcelo Morales Torcato  
(Marcelo Torca)

# 50 Estudos para Bateria

1ª. Edição

Pauliceia  
Marcelo Morales Torcato  
2012

Pauliceia, 17 de janeiro de 2012.

## ÍNDICE.

1. Estudio nº 01.
2. Estudio nº 02.
3. Estudio nº 03.
4. Estudio nº 04.
5. Estudio nº 05.
6. Estudio nº 06.
7. Estudio nº 07.
8. Estudio nº 08.
9. Estudio nº 09.
10. Estudio nº 10.
11. Estudio nº 11.
12. Estudio nº 12.
13. Estudio nº 13.
14. Estudio nº 14.
15. Estudio nº 15.
16. Estudio nº 16.
17. Estudio nº 17.
18. Estudio nº 18.
19. Estudio nº 19.
20. Estudio nº 20.
21. Estudio nº 21.
22. Estudio nº 22.
23. Estudio nº 23.
24. Estudio nº 24.
25. Estudio nº 25.
26. Estudio nº 26.
27. Estudio nº 27.
28. Estudio nº 28.
29. Estudio nº 29.
30. Estudio nº 30.
31. Estudio nº 31.
32. Estudio nº 32.
33. Estudio nº 33.
34. Estudio nº 34.
35. Estudio nº 35.
36. Estudio nº 36.
37. Estudio nº 37.
38. Estudio nº 38.
39. Estudio nº 39.
40. Estudio nº 40.
41. Estudio nº 41.
42. Estudio nº 42.
43. Estudio nº 43.
44. Estudio nº 44.
45. Estudio nº 45.
46. Estudio nº 46.
47. Estudio nº 47.
48. Estudio nº 48.
49. Estudio nº 49.
50. Estudio nº 50.

# 50 Estudos para Bateria

Marcelo Morales Torcato  
(Marcelo Torca)

Estudo nº01.

Estudo nº01. Musical notation for a 4/4 drum study. The notation consists of a single staff with a treble clef and a 4/4 time signature. It features a sequence of notes and rests, with 'x' marks above the notes indicating specific drum sounds. The piece concludes with a double bar line and a final note.

Estudo nº02.

Estudo nº02. Musical notation for a 4/4 drum study. The notation consists of a single staff with a treble clef and a 4/4 time signature. It features a sequence of notes and rests, with 'x' marks above the notes indicating specific drum sounds. The piece concludes with a double bar line and a final note.

Estudo nº03.

Estudo nº03. Musical notation for a 4/4 drum study. The notation consists of a single staff with a treble clef and a 4/4 time signature. It features a sequence of notes and rests, with 'x' marks above the notes indicating specific drum sounds. The piece concludes with a double bar line and a final note.

Estudo nº04.

Estudo nº04. Musical notation for a 4/4 drum study. The notation consists of a single staff with a treble clef and a 4/4 time signature. It features a sequence of notes and rests, with 'x' marks above the notes indicating specific drum sounds. The piece concludes with a double bar line and a final note.

Estudo nº05.

Estudo nº05. Musical notation for a 4/4 drum study. The notation consists of a single staff with a treble clef and a 4/4 time signature. It features a sequence of notes and rests, with 'x' marks above the notes indicating specific drum sounds. The piece concludes with a double bar line and a final note.

Estudo nº06.

Estudo nº06. Musical notation for a 4/4 drum study. The notation consists of a single staff with a treble clef and a 4/4 time signature. It features a sequence of notes and rests, with 'x' marks above the notes indicating specific drum sounds. The piece concludes with a double bar line and a final note.

Estudo nº07.

Estudo nº07. Musical notation for a 4/4 drum study. The notation consists of a single staff with a treble clef and a 4/4 time signature. It features a sequence of notes and rests, with 'x' marks above the notes indicating specific drum sounds. The piece concludes with a double bar line and a final note, followed by a 3/4 time signature change.

Estudo nº08.

Estudo nº08. Musical notation for a drum exercise in 3/4 time. The exercise consists of four measures of eighth-note patterns, each with an 'x' above the note, followed by a double bar line and a final measure with a quarter rest.

Estudo nº09.

Estudo nº09. Musical notation for a drum exercise in 3/4 time. The exercise consists of four measures of eighth-note patterns, each with an 'x' above the note, followed by a double bar line and a final measure with a quarter rest.

Estudo nº10.

Estudo nº10. Musical notation for a drum exercise in 2/4 time. The exercise consists of four measures of eighth-note patterns, each with an 'x' above the note, followed by a double bar line and a final measure with a quarter rest.

Estudo nº11.

Estudo nº11. Musical notation for a drum exercise in 2/4 time. The exercise consists of four measures of eighth-note patterns, each with an 'x' above the note, followed by a double bar line and a final measure with a quarter rest.

Estudo nº12.

Estudo nº12. Musical notation for a drum exercise in 3/4 time. The exercise consists of four measures of eighth-note patterns, each with an 'x' above the note, followed by a double bar line and a final measure with a quarter rest.

Estudo nº13.

Estudo nº13. Musical notation for a drum exercise in 2/4 time. The exercise consists of four measures of eighth-note patterns, each with an 'x' above the note, followed by a double bar line and a final measure with a quarter rest.

Estudo nº14.

Estudo nº14. Musical notation for a drum exercise in 3/4 time. The exercise consists of four measures of eighth-note patterns, each with an 'x' above the note, followed by a double bar line and a final measure with a quarter rest.

Estudo nº15.

Estudo nº15. Musical notation for a drum exercise in 2/4 time. The exercise consists of four measures of eighth-note patterns, each with an 'x' above the note, followed by a double bar line and a final measure with a quarter rest.

Estudo nº16.

Two staves of music for Estudio nº16. The top staff is in 4/4 time and features a complex rhythmic pattern of eighth and sixteenth notes with many rests. The bottom staff is in common time (C) and features a similar rhythmic pattern with rests. The piece concludes with a double bar line and a common time signature.

Estudo nº17.

Two staves of music for Estudio nº17. The top staff is in common time (C) and features a complex rhythmic pattern of eighth and sixteenth notes with many rests. The bottom staff is in 4/4 time and features a similar rhythmic pattern with rests. The piece concludes with a double bar line and a 4/4 time signature.

Estudo nº18.

Two staves of music for Estudio nº18. The top staff is in 4/4 time and features a complex rhythmic pattern of eighth and sixteenth notes with many rests. The bottom staff is in common time (C) and features a similar rhythmic pattern with rests. The piece concludes with a double bar line and a common time signature.

Estudo nº19.

Two staves of music for Estudio nº19. The top staff is in common time (C) and features a complex rhythmic pattern of eighth and sixteenth notes with many rests, including triplets. The bottom staff is in 4/4 time and features a similar rhythmic pattern with rests, including triplets. The piece concludes with a double bar line and a 4/4 time signature.

Estudo n°20.

Musical score for Estudio n°20, featuring two staves. The top staff is in 4/4 time and contains a sequence of eighth notes with 'x' marks above them, indicating specific drum hits. The bottom staff contains a corresponding bass line with eighth notes and rests. The piece concludes with a double bar line and a common time signature 'C'.

Estudo n°21.

Musical score for Estudio n°21, featuring two staves. The top staff is in common time (C) and contains a sequence of eighth notes with 'x' marks above them. The bottom staff contains a corresponding bass line with eighth notes and rests. The piece concludes with a double bar line and a 3/4 time signature.

Estudo n°22.

Musical score for Estudio n°22, featuring two staves. The top staff is in 3/4 time and contains a sequence of eighth notes with 'x' marks above them. The bottom staff contains a corresponding bass line with eighth notes and rests. The piece concludes with a double bar line and a common time signature 'C'.

Estudo n°23.

Musical score for Estudio n°23, featuring two staves. The top staff is in common time (C) and contains a sequence of eighth notes with 'x' marks above them. The bottom staff contains a corresponding bass line with eighth notes and rests. The piece concludes with a double bar line and a 2/4 time signature.

Estudo n°24.

Two staves of music for Estudio n°24 in 2/4 time. The top staff features a sequence of eighth notes with 'x' marks above them, indicating cymbal accents. The bottom staff features a sequence of quarter notes with 'x' marks below them, indicating snare accents. The piece concludes with a double bar line and a 3/4 time signature.

Estudo n°25.

Two staves of music for Estudio n°25 in 3/4 time. The top staff features a sequence of eighth notes with 'x' marks above them. The bottom staff features a sequence of quarter notes with 'x' marks below them. The piece concludes with a double bar line and a 2/4 time signature.

Estudo n°26.

Two staves of music for Estudio n°26 in 2/4 time. The top staff features a sequence of eighth notes with 'x' marks above them. The bottom staff features a sequence of quarter notes with 'x' marks below them. The piece concludes with a double bar line and a 3/4 time signature.

Estudo n°27.

Two staves of music for Estudio n°27 in 3/4 time. The top staff features a sequence of quarter notes with 'x' marks above them. The bottom staff features a sequence of eighth notes with 'x' marks below them. The piece concludes with a double bar line and a 2/4 time signature.

Estudo n°28.

Two staves of music for Estudio n°28 in 2/4 time. The top staff features a sequence of eighth notes with 'x' marks above them. The bottom staff features a sequence of quarter notes with 'x' marks below them. The piece concludes with a double bar line and a 4/4 time signature.



Estudo n°29.

Musical score for Estudio n°29, 4/4 time signature. The score consists of four systems of two staves each. Dynamics include *p*, *mf*, *sfz p*, *cresc.*, *f*, *pp*, *sfz p*, *mf*, *sfz p*, *mf*, *f*, and *ff*. Articulations include accents, slurs, and triplets. The piece concludes with a double bar line and a common time signature *C*.

Estudo n°30.

Musical score for Estudio n°30, common time signature. The score consists of four systems of two staves each. Dynamics include *mf*, *sfz p*, *mf*, *f*, and *ff*. Articulations include accents, slurs, and triplets. The piece concludes with a double bar line and a 4/4 time signature.

Estudo n°31.

Estudo n°32.

Estudo n°33.

Estudo n°34.

Estudo n°35.

Estudo n°36.

Estudo n°37.

Estudo n°38.

Estudo n°39.

Estudo n°40.

Estudo n°41.

Musical notation for Estudio n°41 in 4/4 time. The piece consists of four measures of eighth and sixteenth notes, with 'x' marks above the notes. It concludes with a double bar line and a common time signature 'C'.

Estudo n°42.

Musical notation for Estudio n°42 in common time. The piece features four measures of eighth notes, with the first two measures containing triplets of eighth notes. It concludes with a double bar line and a 3/4 time signature.

Estudo n°43.

Musical notation for Estudio n°43 in 3/4 time. The piece consists of four measures of eighth notes, with 'x' marks above the notes. It concludes with a double bar line and a common time signature 'C'.

Estudo n°44.

Musical notation for Estudio n°44 in common time. The piece consists of four measures of eighth notes, with 'x' marks above the notes. It concludes with a double bar line and a 2/4 time signature.

Estudo n°45.

Musical notation for Estudio n°45 in 2/4 time. The piece consists of four measures of eighth notes, with 'x' marks above the notes. It concludes with a double bar line and a common time signature 'C'.

Estudo n°46.

Musical notation for Estudio n°46 in common time. The piece consists of four measures of eighth notes, with 'x' marks above the notes. It concludes with a double bar line and a 5/4 time signature.

Estudo n°47.

Musical notation for Estudio n°47 in 5/4 time. The piece consists of four measures of eighth notes, with 'x' marks above the notes. It concludes with a double bar line and a common time signature 'C'.

Estudo n°48.

Musical notation for Estudio n°48 in common time. The piece consists of four measures of eighth notes, with 'x' marks above the notes. It concludes with a double bar line and a 7/4 time signature.

Estudo n°49.

Musical notation for Estudio n°49 in 7/4 time. The piece consists of four measures of eighth notes, with 'x' marks above the notes. It concludes with a double bar line and a common time signature 'C'.

Estudo n°50.

Musical notation for Estudio n°50 in common time. The piece consists of four measures of eighth notes, with the first two measures containing triplets of eighth notes. It concludes with a double bar line.

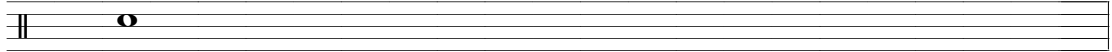


# Bateria.

<http://bateria.marcelotorca.net>

# Banda de Música MACRISAN

Caixa



4 As Coisas. Marcelo

$\text{♩} = 120$

Torca.



9



13



17



21



25



29



33



37



41



45

Andando.

♩ = 120

Caixa

Marcelo Torca.

*p*

49

Musical staff for measure 49, showing a sequence of notes and rests.

53

Musical staff for measure 53, featuring a series of notes with 'x' marks above them, indicating specific articulation or dynamics.

58

Musical staff for measure 58, showing a sequence of notes with *sfz* markings below them.

62

Musical staff for measure 62, featuring a series of notes with *sfz* markings below them.

66

Musical staff for measure 66, showing a sequence of notes with *sfz* markings below them, and a change in time signature to 1/4.

70

Musical staff for measure 70, featuring a series of notes with 'x' marks above them.

74

Musical staff for measure 74, showing a sequence of notes with 'x' marks above them, and a change in time signature to 1/4.

78

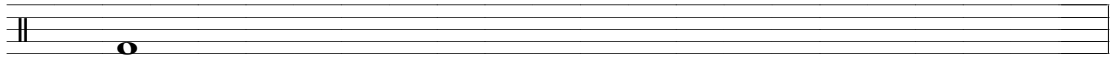
Musical staff for measure 78, featuring a series of notes with *sfz* markings below them, and a change in time signature to 4/4.

82

Musical staff for measure 82, showing a sequence of notes with *sfz* markings below them.

# Banda de Música MACRISAN

Bumbo



4

As Coisas. Marcelo

$\text{♩} = 120$

Torca.



8

*p*



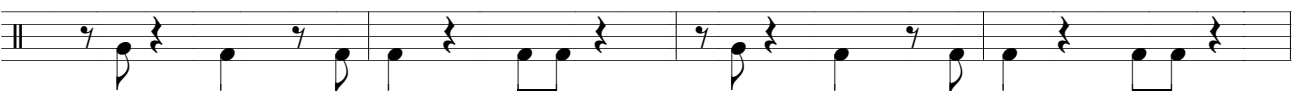
12



16



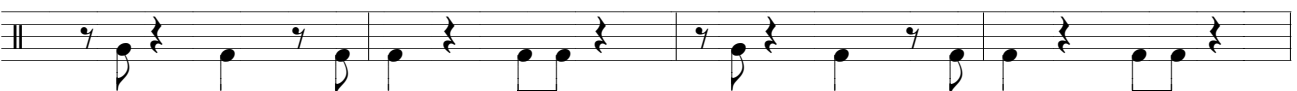
20



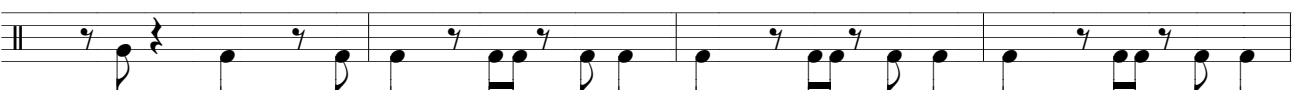
24



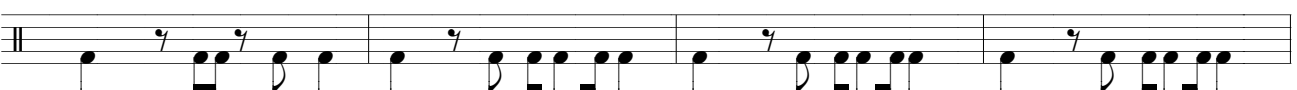
28



32



36



40



44 *Andando.* ♩ = 120  
Bumbo **Marcelo Torca.**

48

52

56

60

64

68

72

76

80

84



# Estudos de Bateria e Percussão.

Bateria. Para um instrumentista.

Bumbo Caixa Prato.de.choque Tom1 Tom2 Surdo Prato.Ride Prato.Splash Cowbell

1.

Percussão. Para três instrumentista.

Atabaque Pandeiro Triângulo.Afouxé.Pandeirola.Guizo.Ganzá

2.

3.

Bateria.

Percussão.

4.

Musical notation for Percussion exercise 4. It consists of two staves in common time (C). The top staff features a rhythmic pattern of eighth notes with 'x' marks above them, indicating a specific percussive sound. The bottom staff features a similar pattern of eighth notes with 'x' marks above them. The piece concludes with a double bar line and a 4/4 time signature.

5.

Bateria.

Musical notation for Drum set exercise 5. It consists of seven staves in 4/4 time. The notation includes various rhythmic patterns for different drum parts, with 'x' marks and asterisks indicating specific sounds or accents. The piece concludes with a double bar line and a common time (C) signature.

Percussão.

6.

Musical notation for Percussion exercise 6, featuring a complex rhythmic pattern with eighth and sixteenth notes and rests.

7.

Musical notation for Percussion exercise 7, featuring a complex rhythmic pattern with eighth and sixteenth notes, triplets, and rests.

# O Menino Mentiroso

Paulicéia, 16 de junho de 2002

L. Maria José Morales Torcato  
M. Marcelo Morales Torcato

1

bateria  $\frac{2}{4}$  *mf*

4

7

10

13

16

19

22

25

*p*

28

31

34

37

40

43

46

49

52

The image displays a musical score for guitar, organized into systems of three measures each. The first staff of each system contains guitar chords, indicated by 'x' marks above the notes. The second staff contains a melodic line, starting with a dynamic marking of *mf* and accents (>) in the second measure. The third staff continues the melodic line, featuring triplets (3) and accents (>) in the third measure. The measure numbers 28, 31, 34, 37, 40, 43, 46, 49, and 52 are positioned to the left of their respective systems.

55

58

61

64

67

70

73

76

79

The image displays a musical score for guitar, organized into five systems of staves. Each system consists of a rhythmic notation staff (top) and a melodic notation staff (bottom). The systems are numbered 82-84, 85-87, 88-90, 91-93, and 94. The notation includes various rhythmic values, accents (>), and slurs. Systems 88 and 94 feature triplets, indicated by a '3' below the notes. System 94 concludes with a final double bar line.