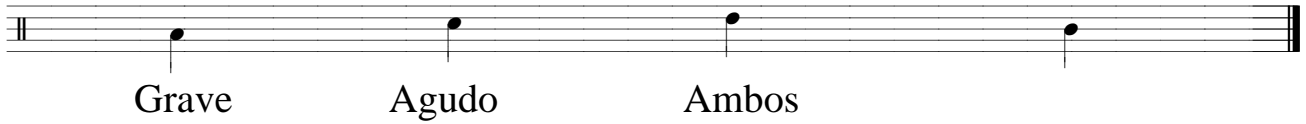


# Grade

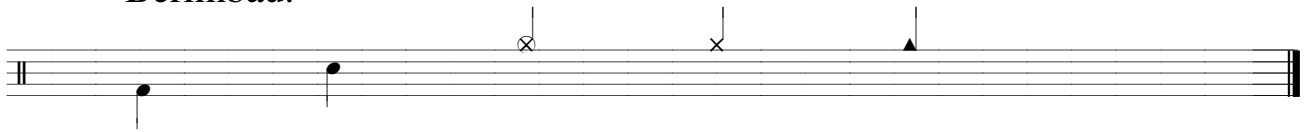
Para: Agogô e Triângulo; Reco-reco e Ganzá; Berimbau; Tamborim;  
Pandeiro; Caixa; Cajón; Timba ou Tantã; Surdo.

Agogô e Triângulo.

Reco-reco e Ganzá.



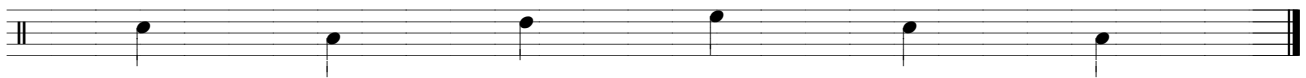
Berimbau.



Nota Grave Nota Aguda Dobrão Escracho Caxixi

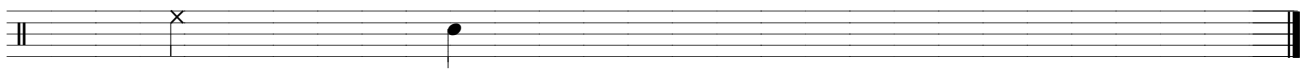
Tamborim.

Pandeiro.



Baqueta Dedo Base Dedos Polegar Membrana

Caixa.



Aro

Pele

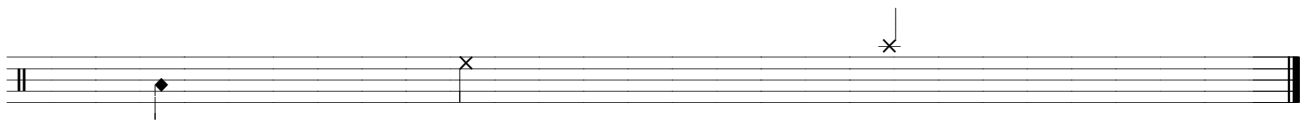
Cajón.



Bumbo

Caixa

Borda



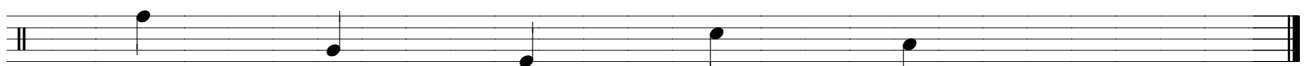
Lateral

Baqueta na Caixa

Chocalho de Canela

Timba ou Tantã.

Surdo.



Fuste

Mão

Dedo

Mão

Baqueta